

4"x4" GBF FLUSH, FIRM  
TIE FROM CORNER  
S 05°08'57" W FOR  
1.16''

UP#31/49-1  
WITH RAIL  
ROAD SPIKE  
FOUND  
EL=431.46'

ROUTE 103

PAVEMENT  
WIDTH  
44.4'

HAMPSHIRE

LOT 4-1  
1.484 ACRES

NEW FLOOD  
FRINGE LINE  
DESCRIBED BY  
METES AND BOUNDS

OLD FLOOD  
FRINGE LINE

LOT 4-2  
1.647 ACRES

338.04' PAVED DRIVE TO BE ABANDONED

N06°28'28"E

195.47'

" BOUND  
+ FLUSH  
ER WATER

295.00'

PSNH #932

490.47'

418'

210.00'

S69°07'20"E

S06°42'38"W

PSNH #933

914'

914'

192.75'

PSNH #934

S42.79'

M.61°59'19"W

205.00'

S80°57'18"E

234.59'

430

424

422

434

430

430

428

422

428

428

428

428

428

428

428

428

428

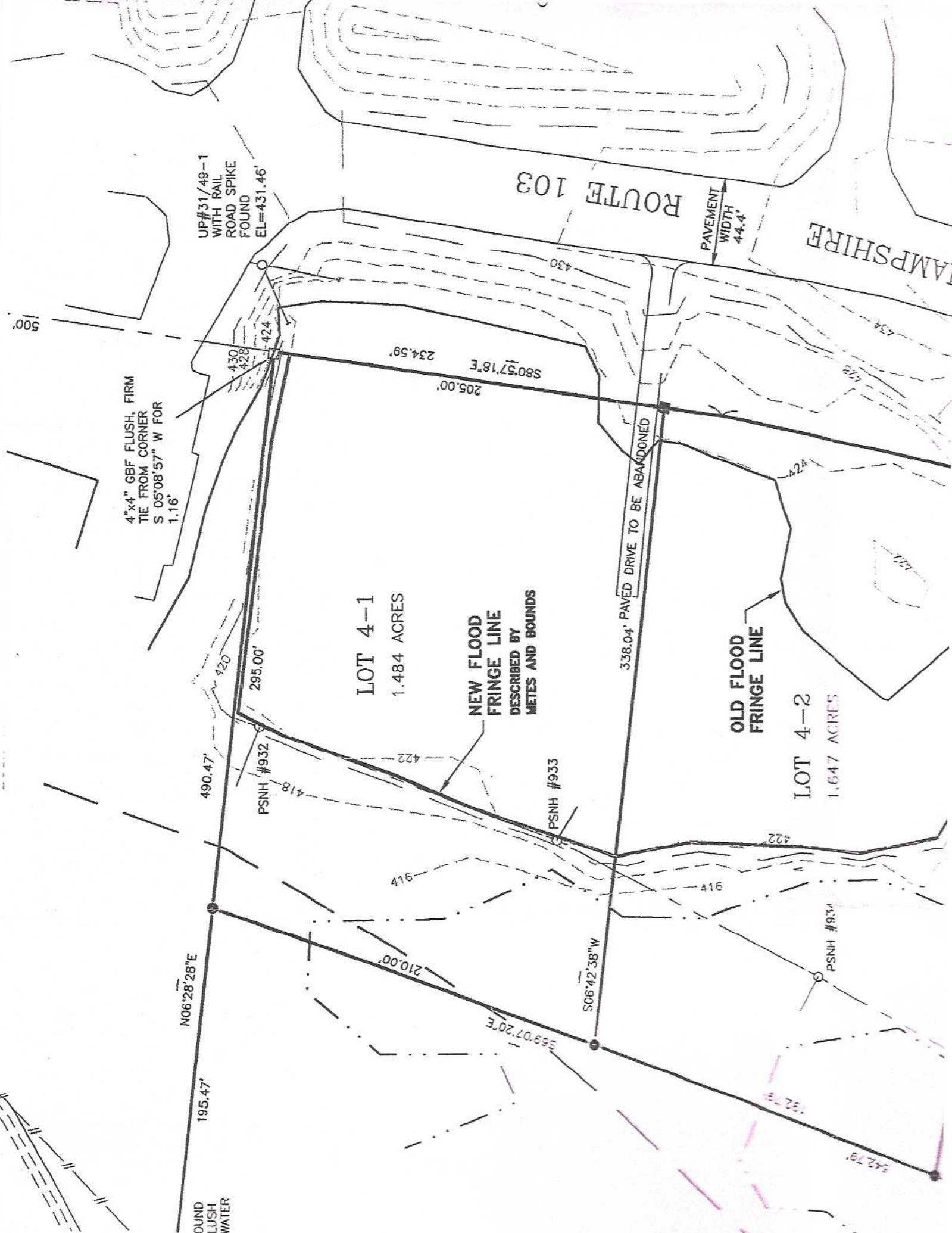
428

428

428

428

428



AMPSHIRE

ROUTE 103

PAVEMENT WIDTH 44.4'

UP #31/49-1 WITH RAIL ROAD SPIKE FOUND EL=431.46'

4"x4" GBF FLUSH, FIRM TIE FROM CORNER S 05°08'57" W FOR 1.16'

LOT 4-1  
1.484 ACRES

NEW FLOOD FRINGE LINE DESCRIBED BY METES AND BOUNDS

OLD FLOOD FRINGE LINE

LOT 4-2  
1.647 ACRES

338.04' PAVED DRIVE TO BE ABANDONED

N06°28'28"E

195.47'

490.47'

295.00'

PSNH #932

PSNH #933

PSNH #934

210.00'

S69°07'20"E

S06°42'38"W

234.59'

205.00'

S80°57'18"E

500'



OUND LUSH WATER